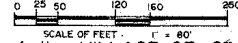


PLAT LEGEND

1. ALL DIMENSIONS ARE IN FEET.
2. CONCRETE MONUMENTS CONSISTING OF A SOLID STEEL ROD, 1/2 INCH IN DIAMETER AND 36 INCHES IN LENGTH AND COMPLETELY ENCASED IN CONCRETE 4 INCHES IN DIAMETER, HAVE BEEN PLACED AT ALL POINTS MARKED THIS "O".
3. CORNER MONUMENTS CONSISTING OF 3/4 INCH STEEL RODS, AT LEAST 4 INCHES IN LENGTH, DRILLED, GROUTED AND CAPPED IN CEMENT WALKS ARE MARKED THIS "O".
4. LOT CORNERS HAVE BEEN MARKED WITH 3/4 INCH IN DIAMETER STEEL RODS, AT LEAST 18 INCHES IN LENGTH. LOT CORNERS MARKED WITH DRILL HOLES OR "P.R." WALLS IN CONCRETE ARE MARKED THIS "X".
5. BEARINGS WERE ESTABLISHED FROM PLANS ON FILE OF THE MICHIGAN DEPARTMENT OF TRANSPORTATION FOR HIGHWAY U.S. 23 (FILE NO. 6-R-2 SHEET 15).
6. ALL CURVILINEAR DIMENSIONS ARE ARC LENGTHS.

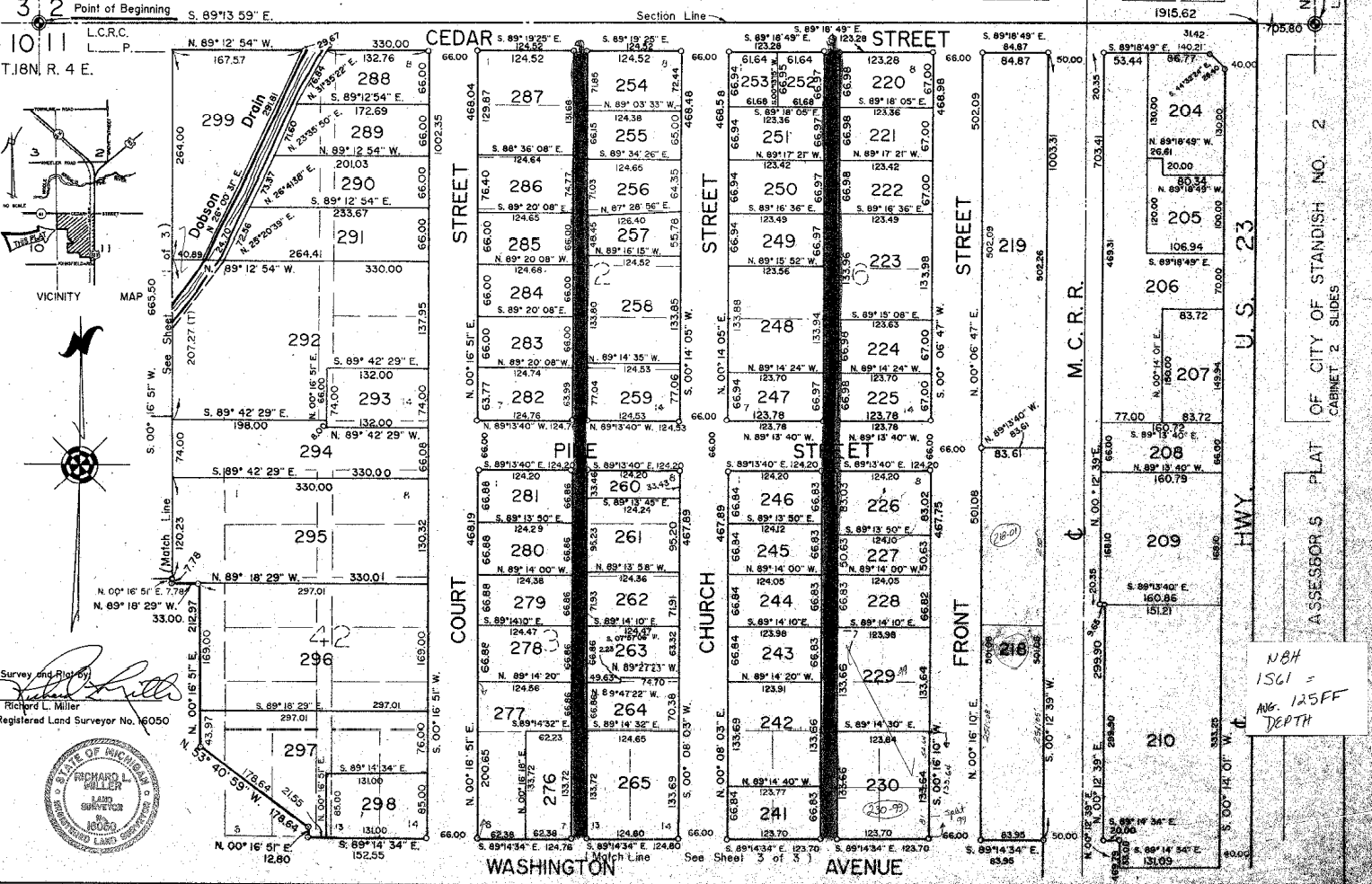
ASSESSOR'S PLAT OF
CITY OF STANDISH NO. 4

A SUBDIVISION OF PART OF THE N.W. 1/4 OF SECTION 11, T. 18 N. R. 4 E.,
 LINCOLN TOWNSHIP, ARENAC COUNTY
 MICHIGAN



Map of the VILLAGE OF GRANTON LIBER 1, PAGES 92-93 BAY COUNTY RECORDS

N. 1/4 Cor. Sec. 11
 T. 18 N. R. 4 E.
 L.C.R.C. L.P.



Survey and Plat by
 Richard L. Miller
 Registered Land Surveyor No. 6050



N8H
 1561 =
 Avg. 125FF
 DEPTH

U.S. 23
 HWY.
 ASSESSOR'S PLAT OF CITY OF STANDISH NO. 2
 CABINET 2 SLIDES