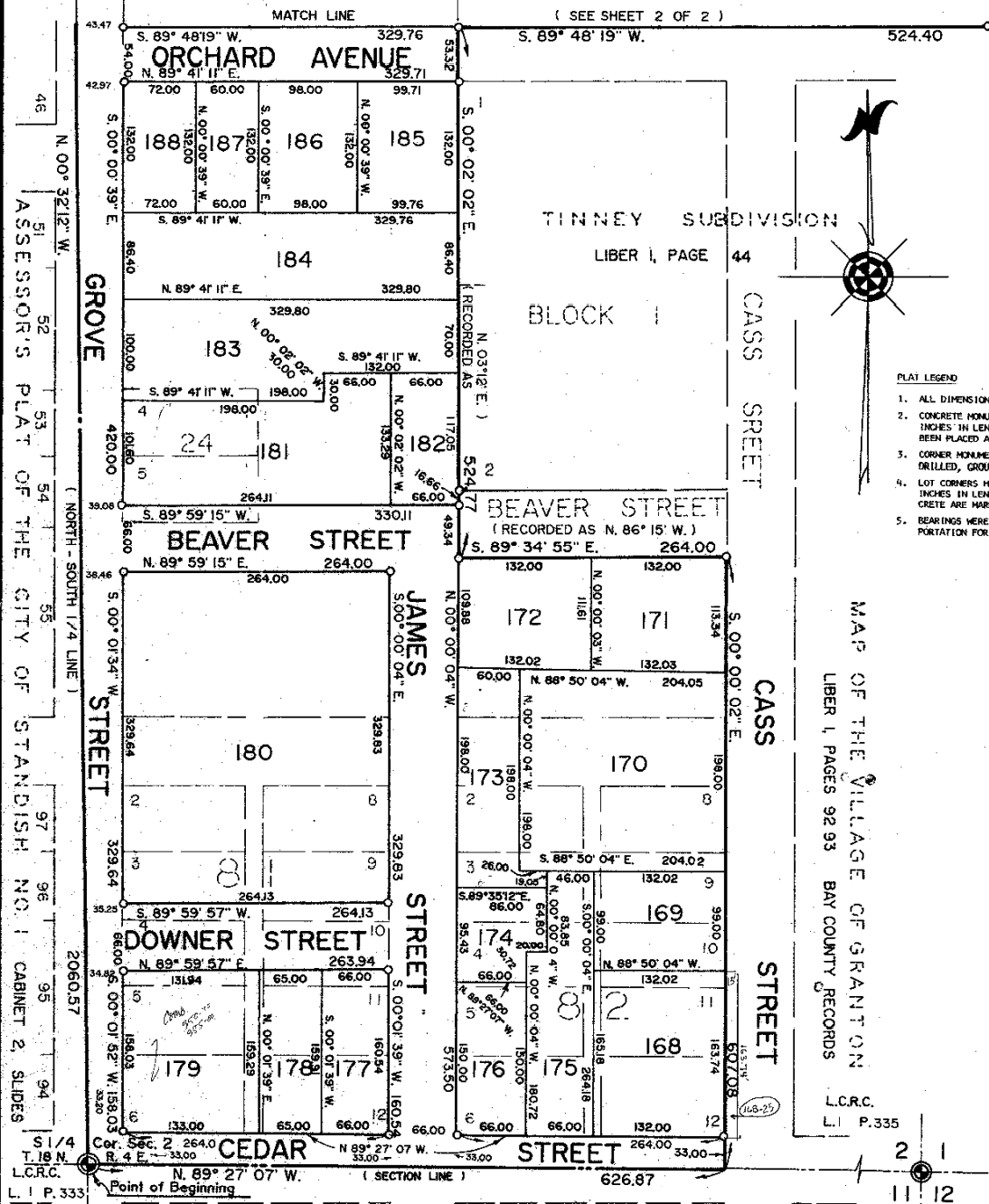


# ASSESSOR'S PLAT OF CITY OF STANDISH NO. 3

A SUBDIVISION OF PART OF THE W. 1/2 OF THE S.E. 1/4 OF SECTION 2, T. 18 N. R. 4 E.  
LINCOLN TOWNSHIP, ARENAC COUNTY  
MICHIGAN



Center Sec. 2  
T. 18 N. R. 4 E.  
L.C.R.C.  
L. I. P. 333



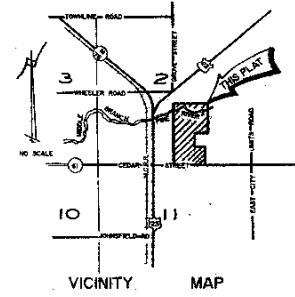
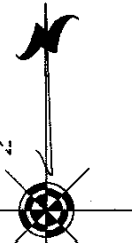
ASSESSOR'S PLAT OF THE CITY OF STANDISH NO. 1 CABINET 2 SLIDES

ASSESSOR'S PLAT OF THE CITY  
NO. 2  
CABINET 2 SLIDES

PLAT OF WHIPPLE'S ADDITION TO  
STANDISH  
LIBER 1, PAGE 23

TINNEY SUBDIVISION  
LIBER 1, PAGE 44  
BLOCK 1

MAP OF THE VILLAGE OF GRANTON  
LIBER 1, PAGES 92-93  
BAY COUNTY RECORDS



PLAT LEGEND

1. ALL DIMENSIONS ARE IN FEET.
2. CONCRETE MONUMENTS CONSISTING OF A SOLID STEEL ROD, 3/4 INCH IN DIAMETER AND 36 INCHES IN LENGTH AND COMPLETELY ENCASED IN CONCRETE 4 INCHES IN DIAMETER, HAVE BEEN PLACED AT ALL POINTS MARKED THUS 'O'.
3. CORNER MONUMENTS CONSISTING OF 3/4 INCH STEEL RODS, AT LEAST 4 INCHES IN LENGTH, DRILLED, GROUDED AND CAPPED IN CEMENT WALKS ARE MARKED THUS 'G'.
4. LOT CORNERS HAVE BEEN MARKED WITH 3/4 INCH IN DIAMETER STEEL RODS, AT LEAST 18 INCHES IN LENGTH. LOT CORNERS MARKED WITH DRILL HOLES OR 'P.X.' NAILS IN CONCRETE ARE MARKED THUS 'X'.
5. BEARINGS WERE ESTABLISHED FROM PLANS ON FILE OF THE MICHIGAN DEPARTMENT OF TRANSPORTATION FOR HIGHWAY U.S. 23 (FILE NO. 6-R-2 SHEET 19).

Survey and Plat by:  
*Richard L. Miller*  
Richard L. Miller  
Registered Land Surveyor No. 16050



L.C.R.C.  
L. I. P. 335

T. 18 N. R. 4 E.