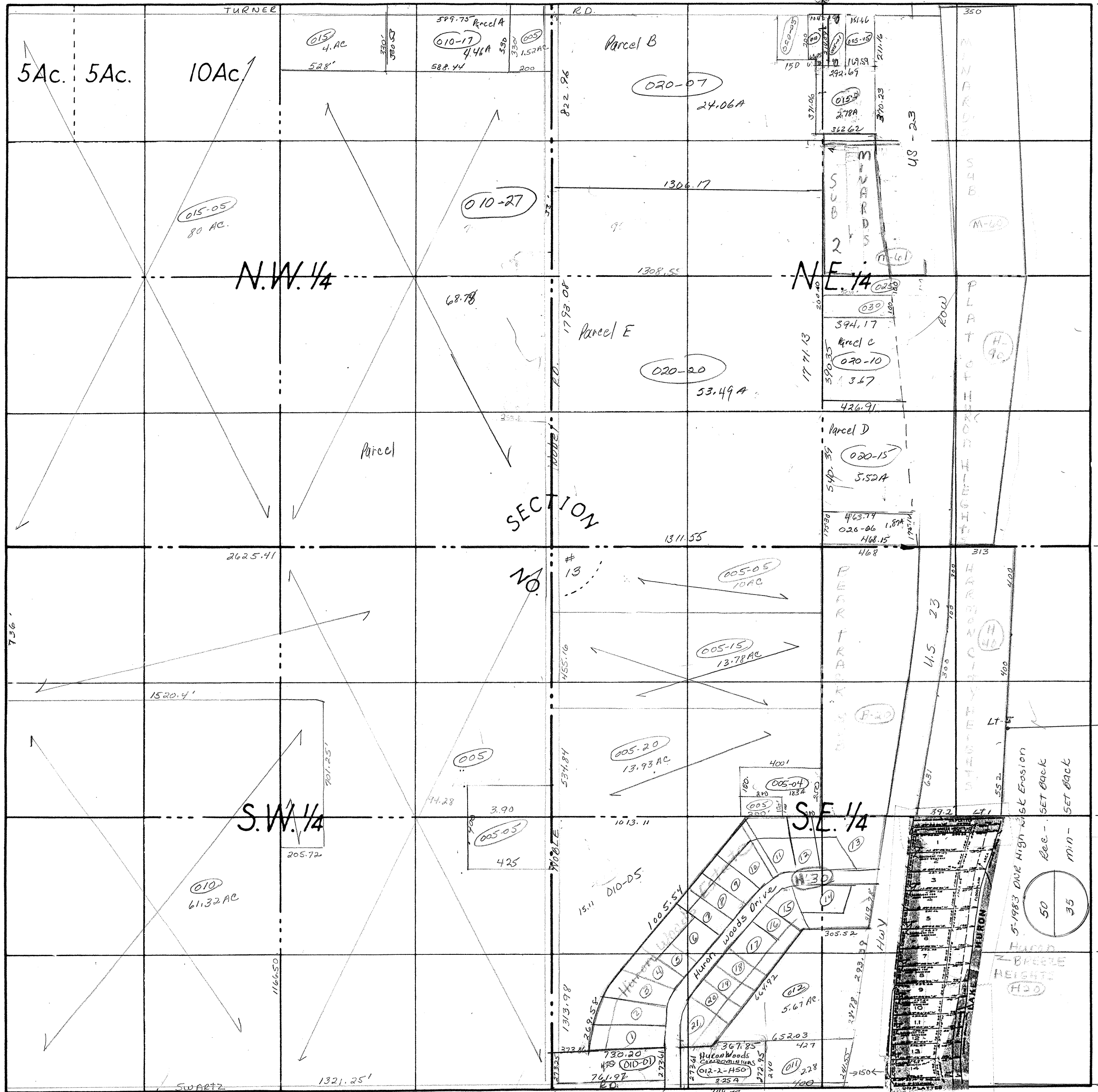


660' = 40 Rods 660' = 40 Rods

1320' = 80 Rods

2640' = 160 Rods SEE EDMONDS SURVEY 6/68

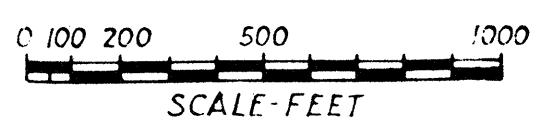


2640' = 160 Rods

1320' = 80 Rods

660' = 40 Rods 660' = 40 Rods

COUNTY ARENAC MICH.
 TOWNSHIP WHITNEY TWP
 RANGE T.20N. R.7E
 SECTION #13
 AREA



NO. _____

DATE 8-4-92 L.M.