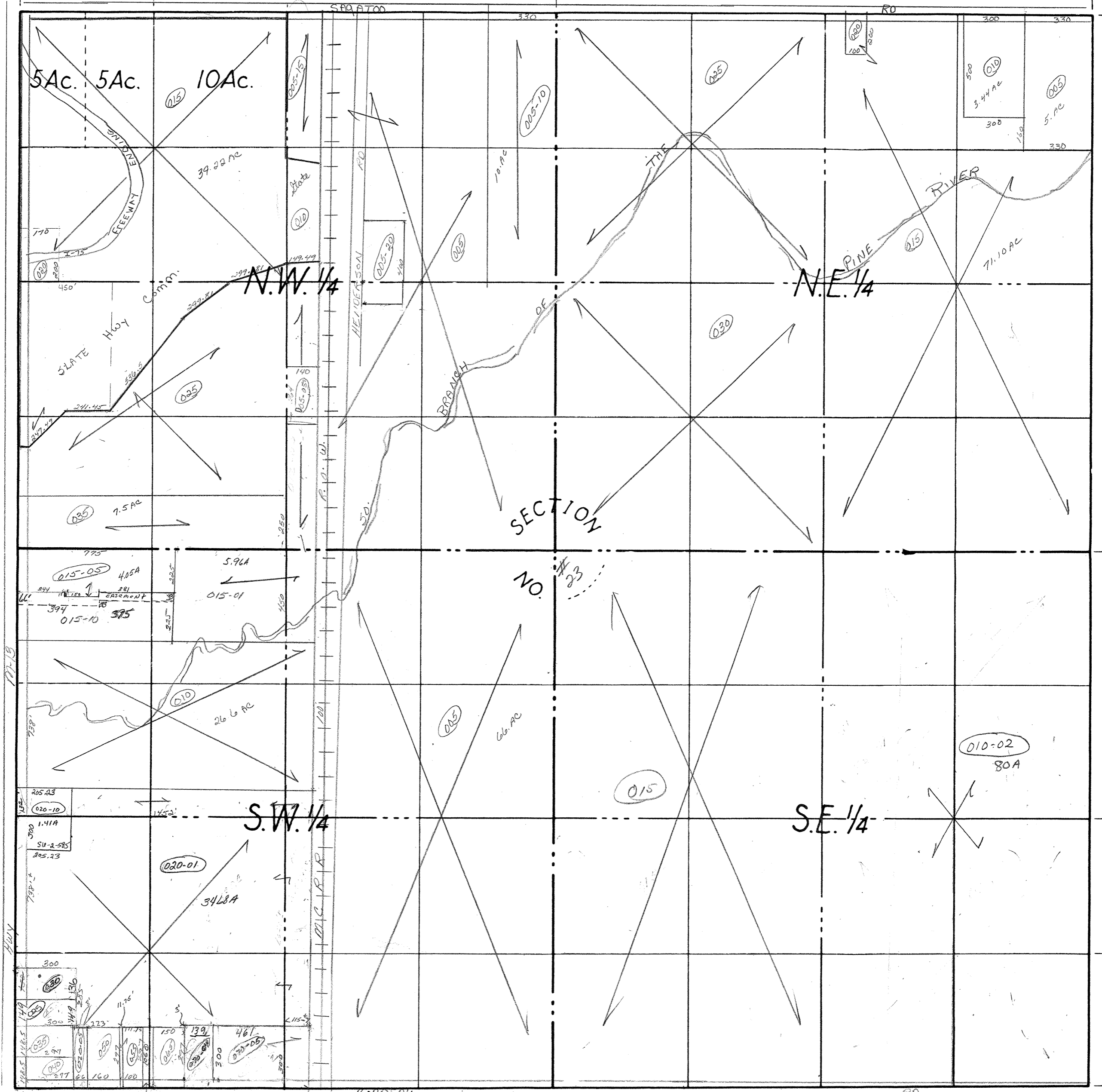


660' = 40 Rods + 660' = 40 Rods +

1320' = 80 Rods

2640' = 160 Rods

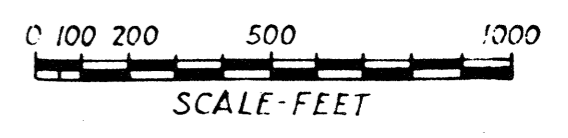


2640' = 160 Rods

1320' = 80 Rods

660' = 40 Rods

COUNTY Arenac MICH.  
 TOWNSHIP Standish twp  
 RANGE T18N R4E  
 AREA Sec. # 23



NO. \_\_\_\_\_

DATE \_\_\_\_\_