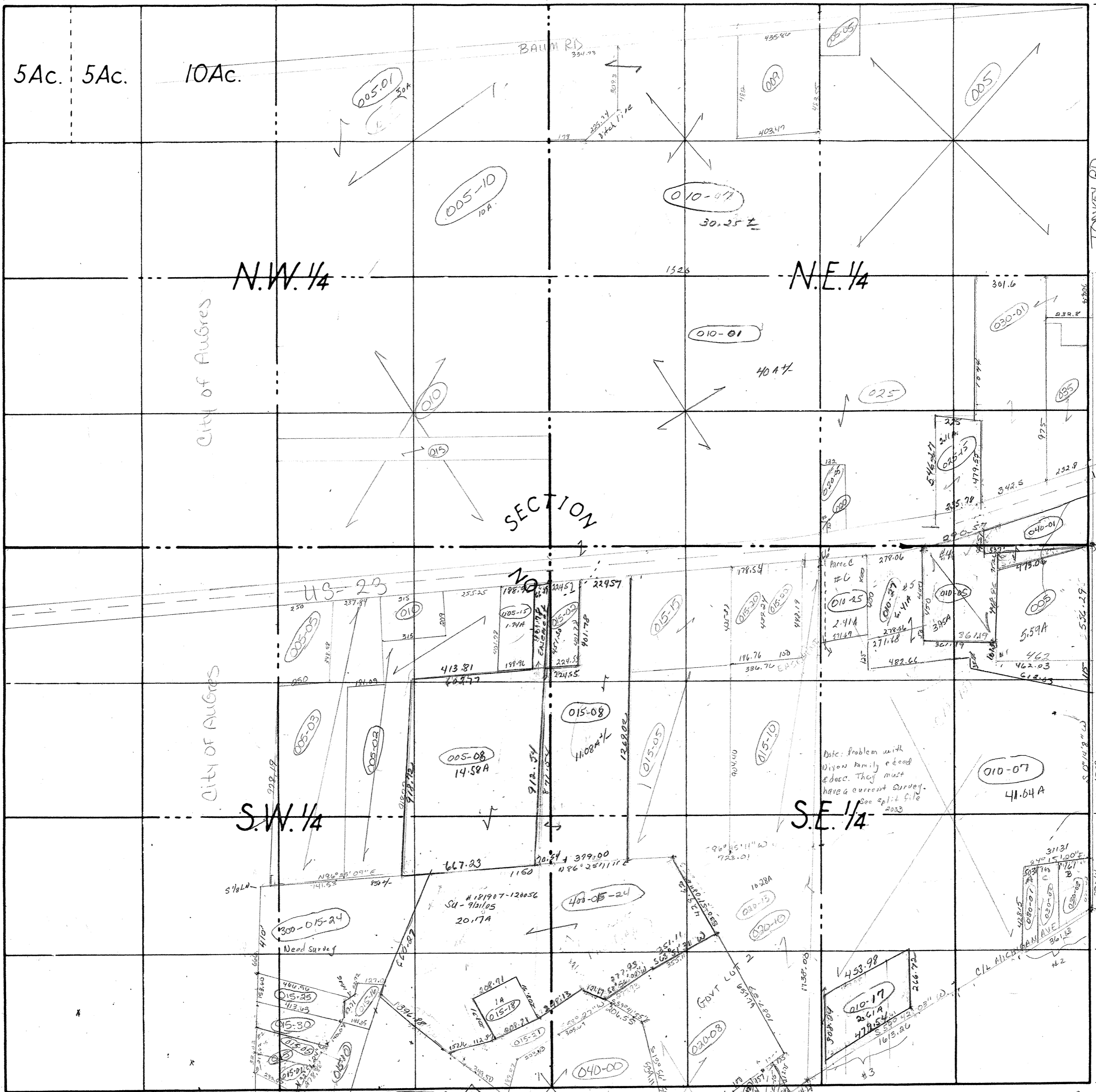


660' = 40 Rods 660' = 40 Rods 1320' = 80 Rods 2640' = 160 Rods



2640' = 160 Rods 1320' = 80 Rods 660' = 40 Rods

N 02° 40' E W SEC LINE

CITY OF AUGRES

N.W. 1/4

N.E. 1/4

S.W. 1/4

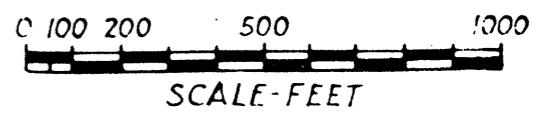
S.E. 1/4

SECTION

Date: Problem with Dixon Family record & desc. They must have a current survey. See split file 2003

N 80° 27' 36" E 1916.93'

COUNTY TOWNSHIP RANGE Michigan Ave AREA SEC 18



DATE 7-9-92

*split file approved 20/9/04

NO.

SEC 18

See Dec 1/65 - 598