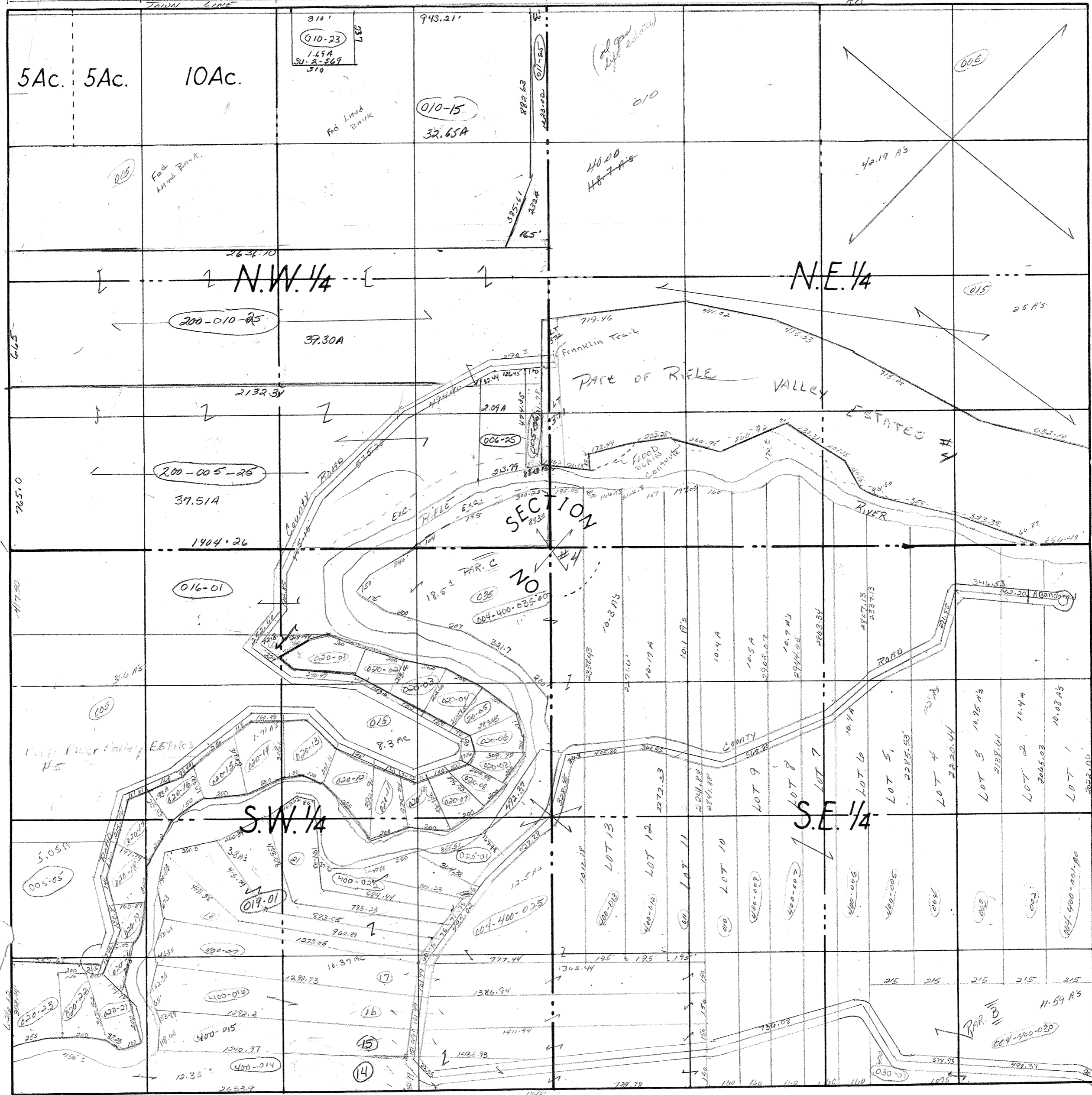
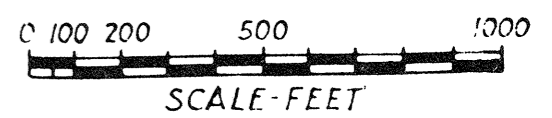


660' = 40 Rods + 660' = 40 Rods + 1320' = 80 Rods + N. LINE OF SEC. 2640' = 160 Rods AS ESTABLISHED BY ORIG. SURVEY



COUNTY Alcona MICH.
 TOWNSHIP Deep River top
 RANGE T19N R4E
 AREA Sec. # 4



DATE _____