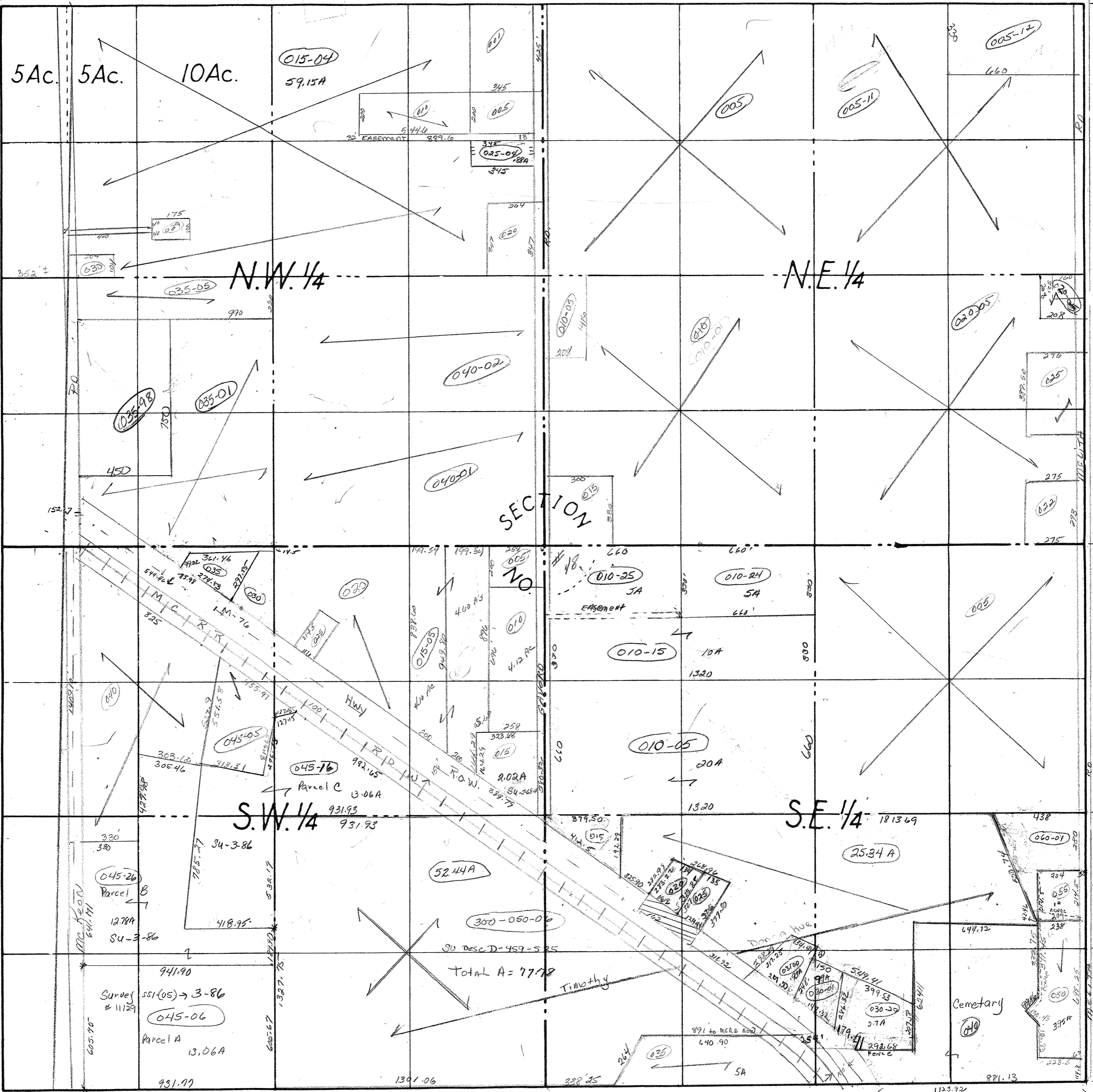
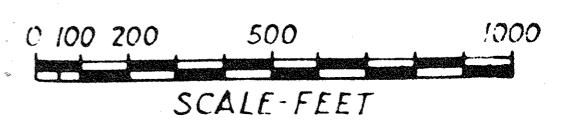


660' = 40 Rods   660' = 40 Rods   1320' = 80 Rods   2640' = 160 Rods



2640' = 160 Rods  
1320' = 80 Rods  
660' = 40 Rods

COUNTY Ansonia MICH.  
 TOWNSHIP Deep River  
 RANGE Town Range  
 AREA Sec # 18



NO. \_\_\_\_\_ DATE \_\_\_\_\_