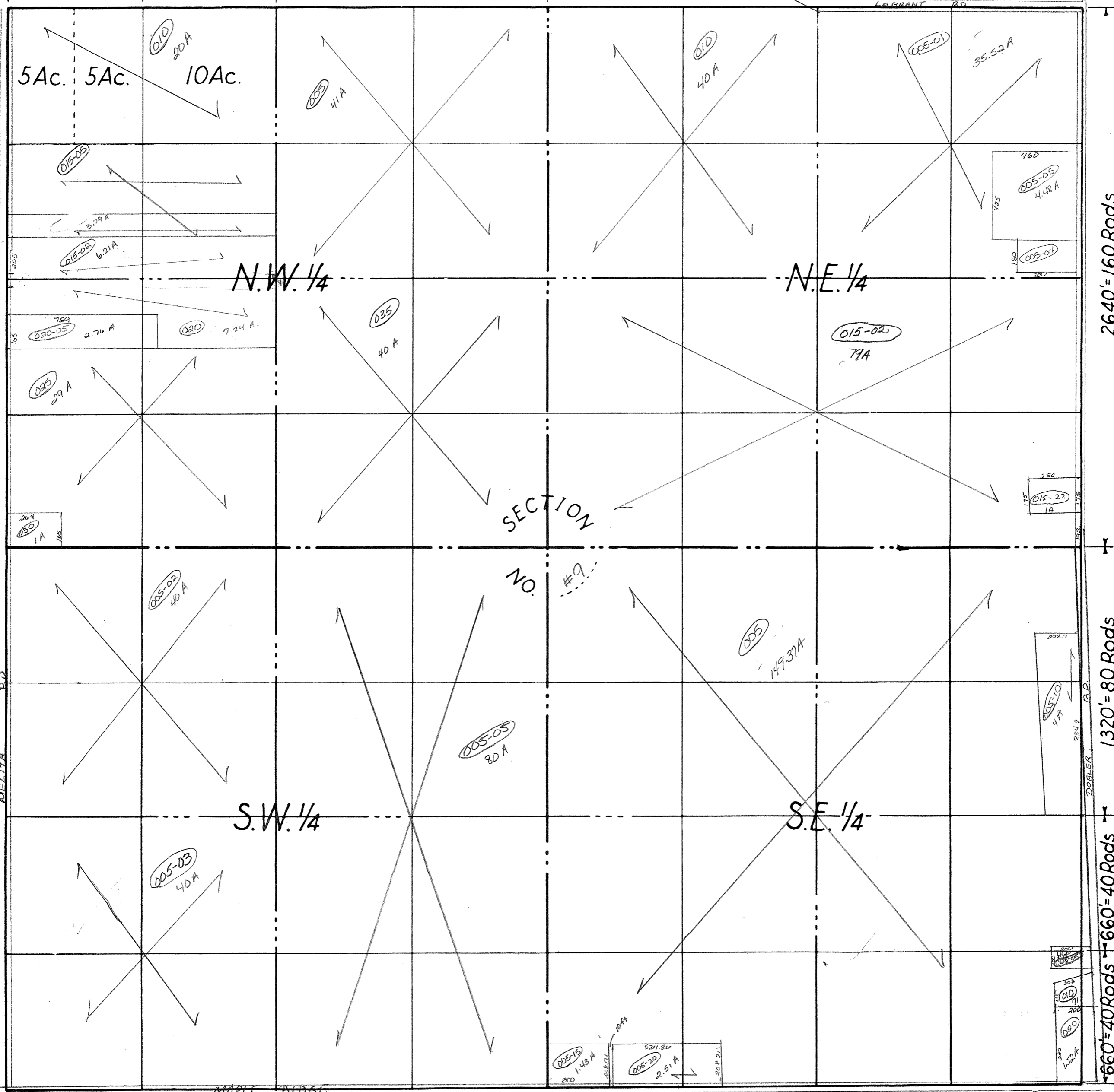


660' = 40 Rods 660' = 40 Rods

1320' = 80 Rods

2640' = 160 Rods



N.W. 1/4

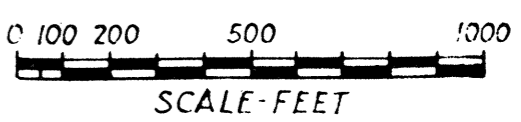
N.E. 1/4

S.W. 1/4

S.E. 1/4

SECTION NO. #9

COUNTY ARENAC MICH.
 TOWNSHIP CLAYTON
 RANGE T20 N R4E
 SEC 9
 AREA



NO. _____

DATE 7/96