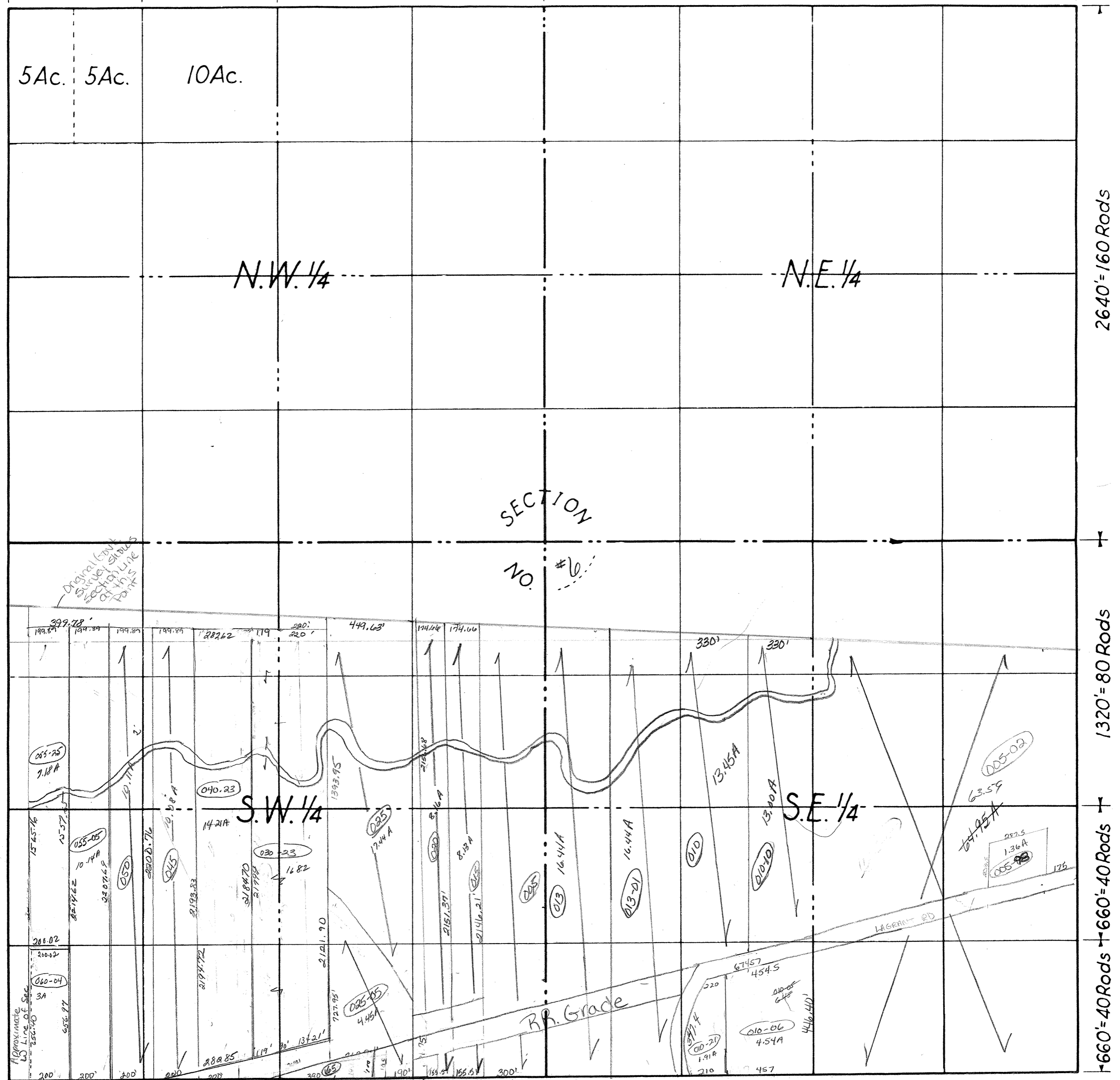
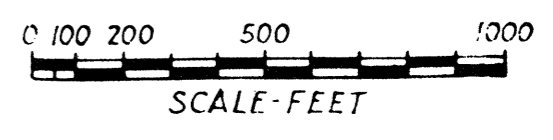


660' = 40 Rods 660' = 40 Rods 1320' = 80 Rods 2640' = 160 Rods



2640' = 160 Rods
1320' = 80 Rods
660' = 40 Rods

COUNTY Arenac MICH.
 TOWNSHIP Clayton
 RANGE T20N R4E
Sec # 6
 AREA _____



NO. _____

DATE 7/96