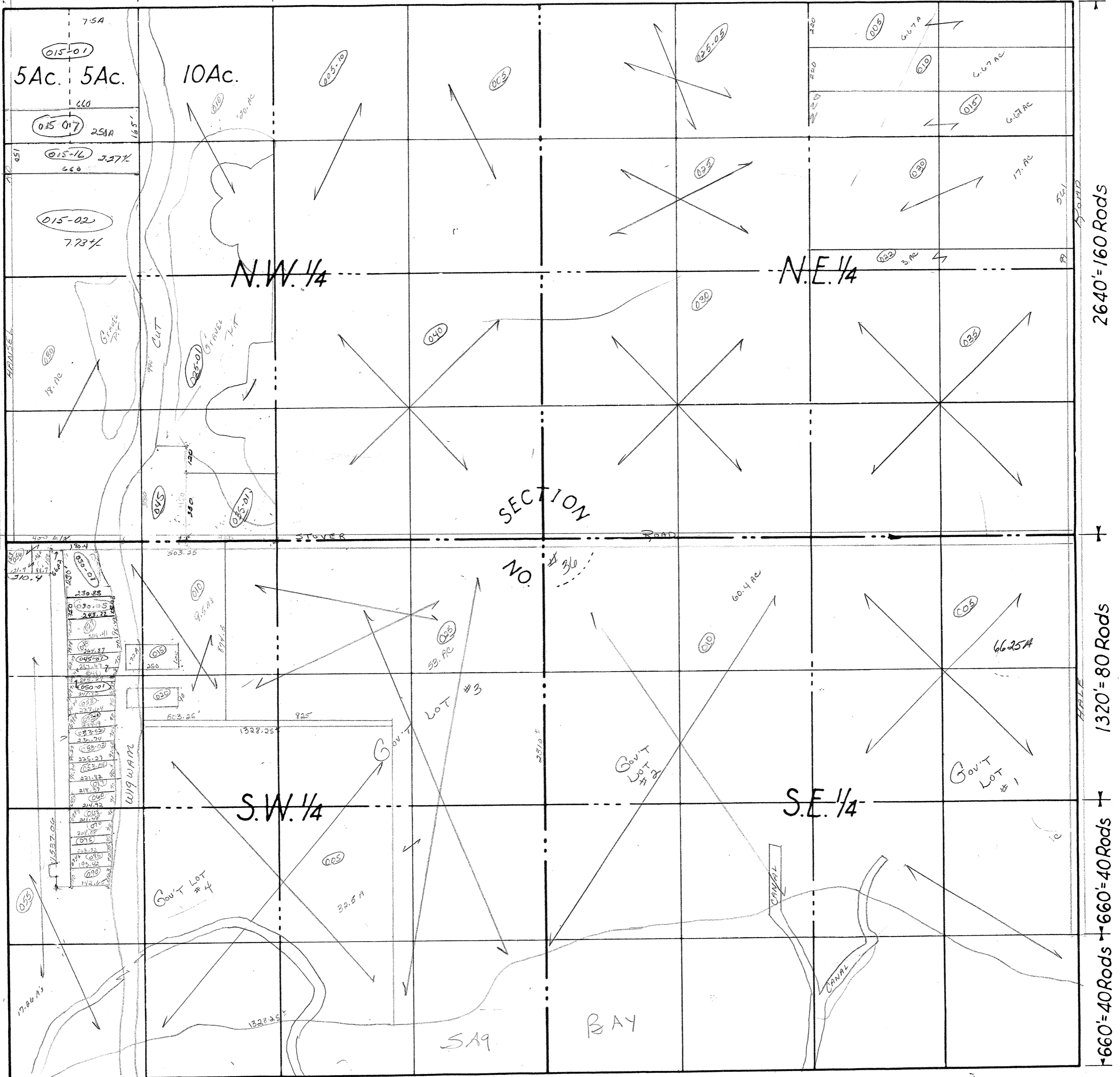




660' = 40 Rods + 660' = 40 Rods +

1320' = 80 Rods

2640' = 160 Rods



COUNTY Oshtemo MICH.  
 TOWNSHIP Oshtemo  
 RANGE T19N R5E  
 AREA Sec. # 36



NO. \_\_\_\_\_

DATE \_\_\_\_\_